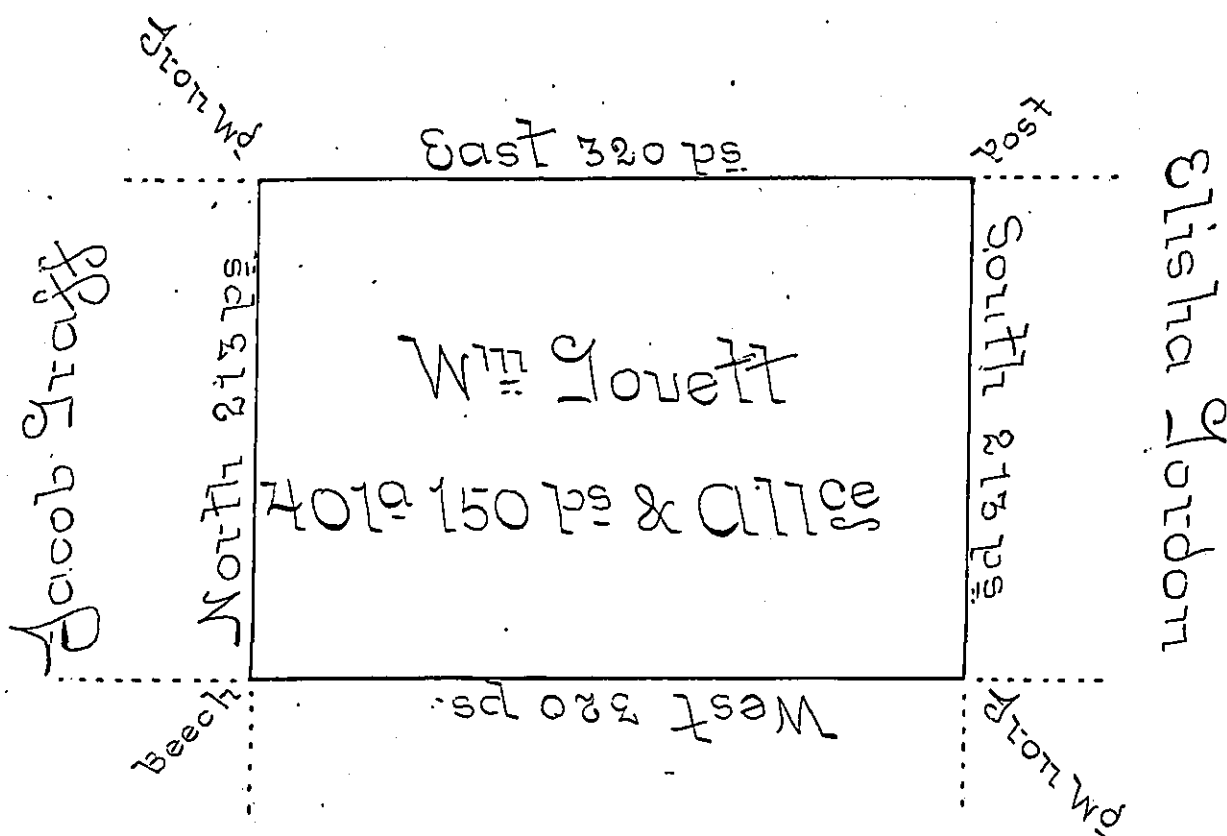


Near the district line No 1.



John Trade

Situate on the west side of French Creek in Allegheny County containing 401 Acres and 150 ps and Allowance of six Percent for Roads &c Surveyed the 9th day of October 1794 in pursuance of a warrant bearing date the 30th day of May - 1792

Wm Power D. S.

To Daniel Brodhead Esq  
 Surveyor General

IN TESTIMONY that the above is a copy of the original remaining on file in the Department of Internal Affairs of Pennsylvania, made conformably to an Act of Assembly approved the 16th day of February, 1833, I have hereunto set my Hand and caused the Seal of said Department to be affixed at Harrisburg, this Third day of October 1899.

*James W. Latta*  
 Secretary of Internal Affairs.